

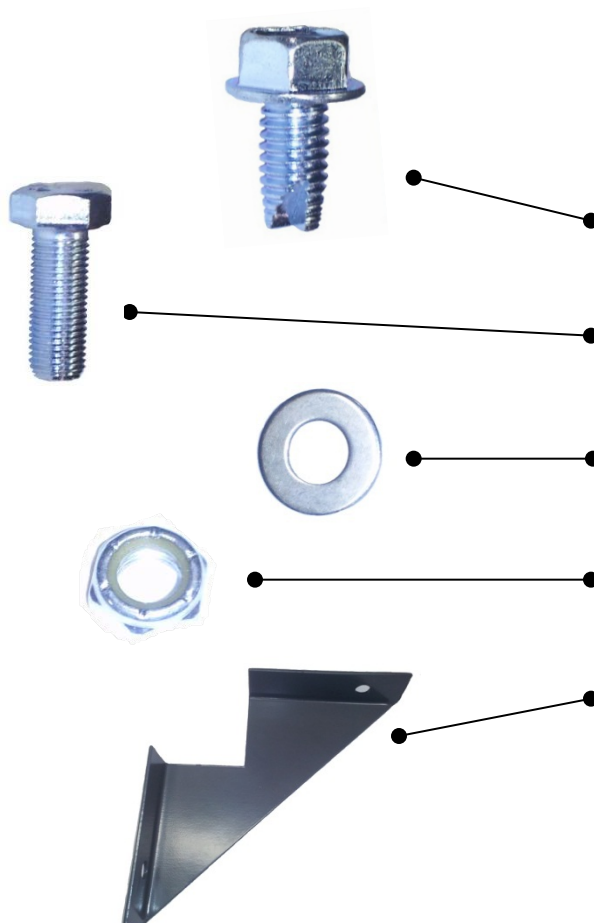


ASSEMBLY INSTRUCTIONS

Continuous Width Production Tables

HARDWARE KIT

Check that your hardware kit includes all of the following pieces:

		No. of Legs	
		3	4
	A	SELF-TAPPING BOLT	
	B	BOLT	
	C	WASHER	
	D	NUT	
	E	GUSSET	
		12	16
		16	24
		16	24
		16	24
		8	12

STEP - 1

To begin assembling your Continuous Width Production Table - Line all of your **Table Tops** face down onto a secure surface. Make sure that each of the **Table Tops** are facing in the same direction and touching. *(Fig. 1-1)*



Step 2:

Starting with (1) of the outer **table legs**, flip **leg** upside down and place over the self-tapping bolt holes, making sure that outside corner of **leg** is facing out.



Step 3:

Secure (4) **self-tapping bolts** – (2) on each side of the **table leg**.

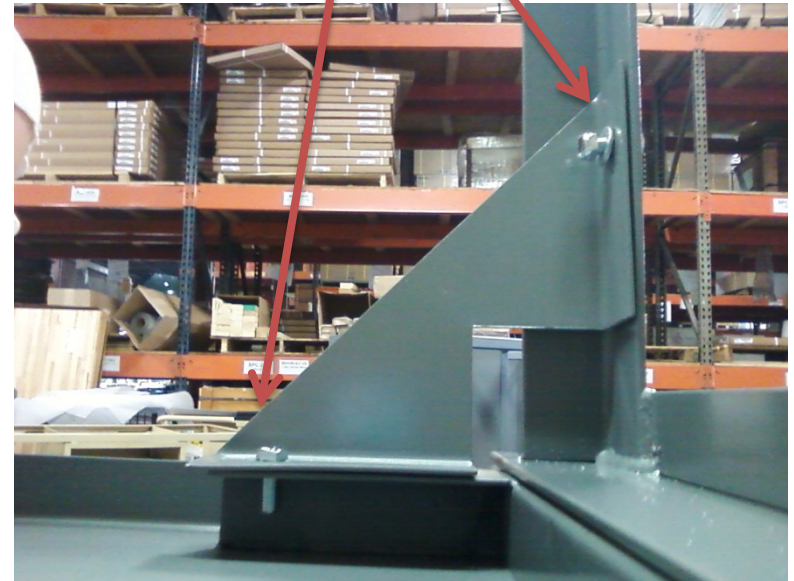
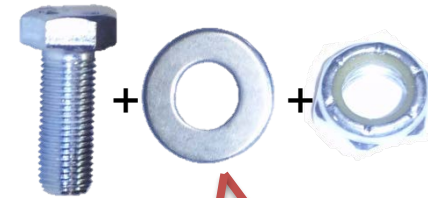


(Picture shown with 1 self-tapping bolt properly in place)

STEP - 4

Position (2) **Gussets** onto the interior side of the outer table leg. Assemble **Bolts** through **Washers**, and fasten with **nuts**. (Fig. 4-1)

Repeat Steps 2-4 for the other outer leg.



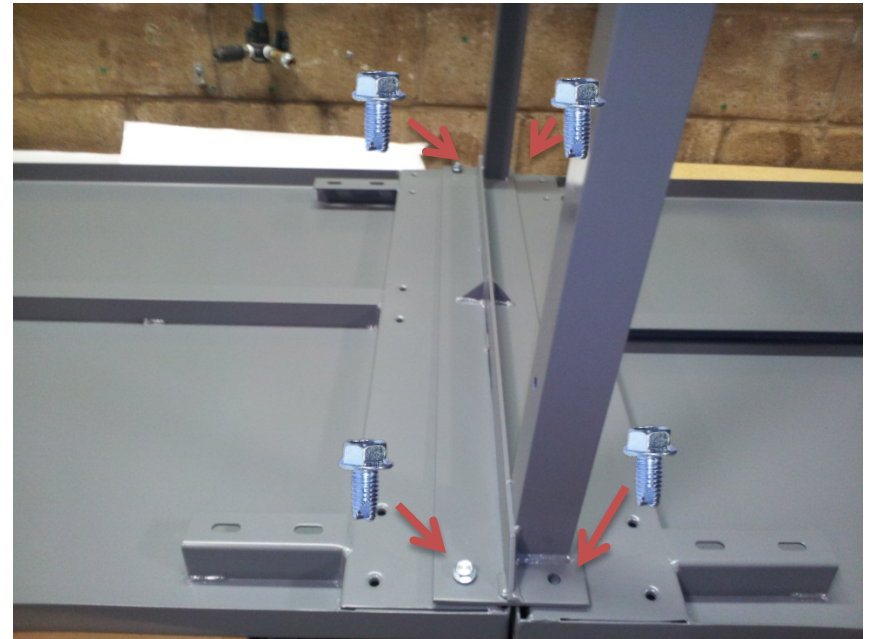
Step 5:

For inner legs – Flip **leg** upside down and place over the edge of both **table tops**, connecting the two. Make sure to line the bolt holes of the **table leg** with the inside sets of bolt holes. (Fig. 5-1)



Step 6:

Secure (4) **self-tapping bolts** – (2) on each side of the **table leg**. (Fig. 6-1)



STEP 7

Position (2) **Gussets** onto each side of the interior **table leg**. Assemble **Bolts** through **Washers**, and fasten with **nuts**. (Fig. 7-1)

Repeat Steps 5-7 for the all other interior legs.

Please Note: If you are only connecting two table tops, you will only have one interior table leg.

